

Max Planck Institute for Infection Biology Guest House

The MPIIB has a guest house with seven fully furnished apartments of varying sizes for its scientific guests.

The guest house is centrally located in the Berlin city center, just a 5-minute walk from the Institute. Its location in a leafy courtyard within walking distance to the government buildings and the Brandenburg Gate shields it from the city noise. It is well connected to all of the public transport systems due to its proximity to the Hauptbahnhof (main train station) and Bahnhof Friedrichstraße.

Address / Map

MPIIB Reception

*Max Planck Institute for Infection Biology
Guest House*

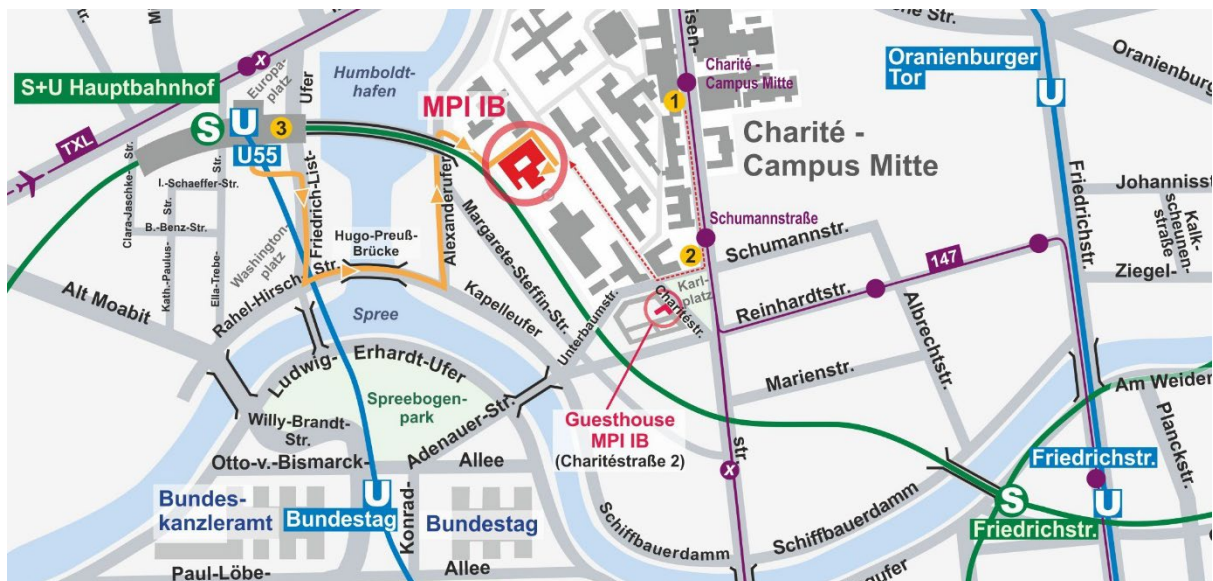
*Charitéplatz 1
10117 Berlin, Germany*

Guest House

*Max Planck Institute for Infection Biology
Guest House*

*Charitéstraße 2
10117 Berlin, Germany*

(The guest house address can also be used as an official **registration address**)



Check-In / Contact

If you have any questions about the Guest House please contact:

Sabine Müller

gaestehaus@mpiib-berlin.mpg.de

The keys for your apartment need to be picked up at the MPIIB Reception desk. Reception is open 24/7.

If you arrive late in the evening or during the weekend, please call the Reception staff by dialing 280 on the intercom on the right hand side of the entrance.

Apartments

All of the apartments are equipped with a private bathroom and have a TV and Wi-Fi (internet) connection.

Apartments 1 and 2 as well as 4 and 5 are connected through a corridor that can be entered from the main staircase. The corridor has an equipped kitchenette for common use.

Apartments 3, 6 and 7 each have their own kitchen, which is also fully equipped.

The apartments are cleaned twice a week, on Tuesdays and Fridays. We will provide you with towels and bedding at check-in. There will be a slight charge for additional bedding and towels and can be requested.

A washing machine and tumble dryer are available in the basement common area for all of the apartments.

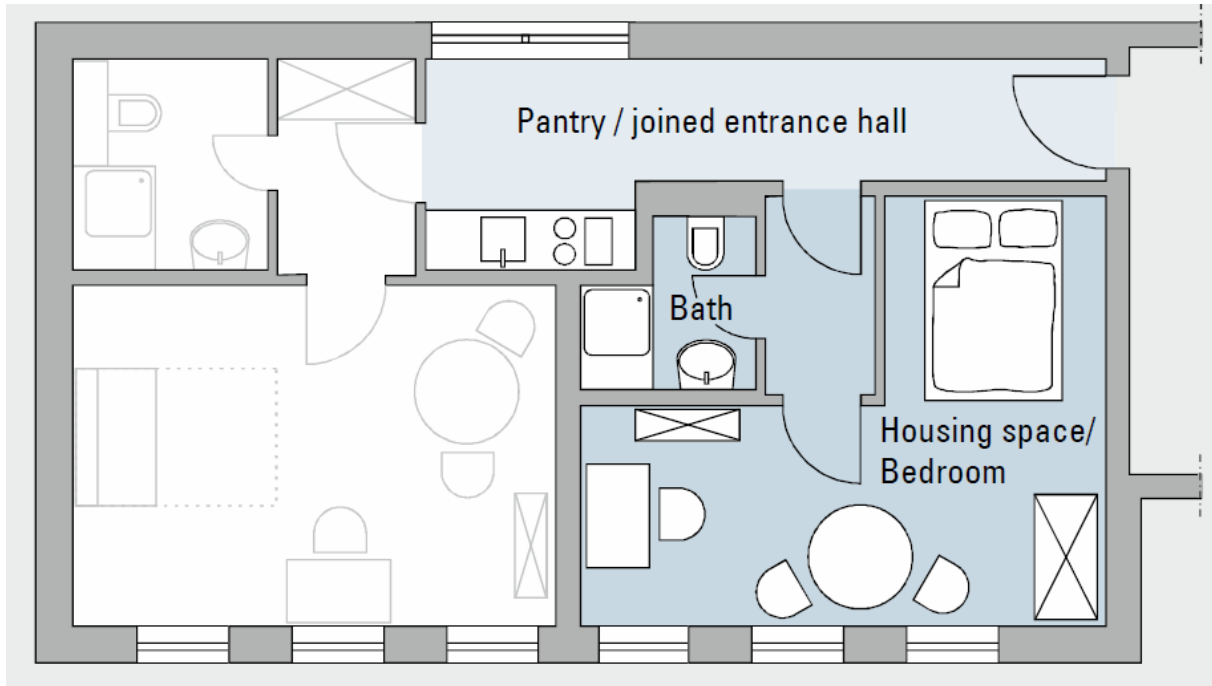
A baby bed and/or additional bed can be provided upon request.

You can find the prices for the apartments in the [price list](#).

Apartment 1

21.4 m² - New building, basement

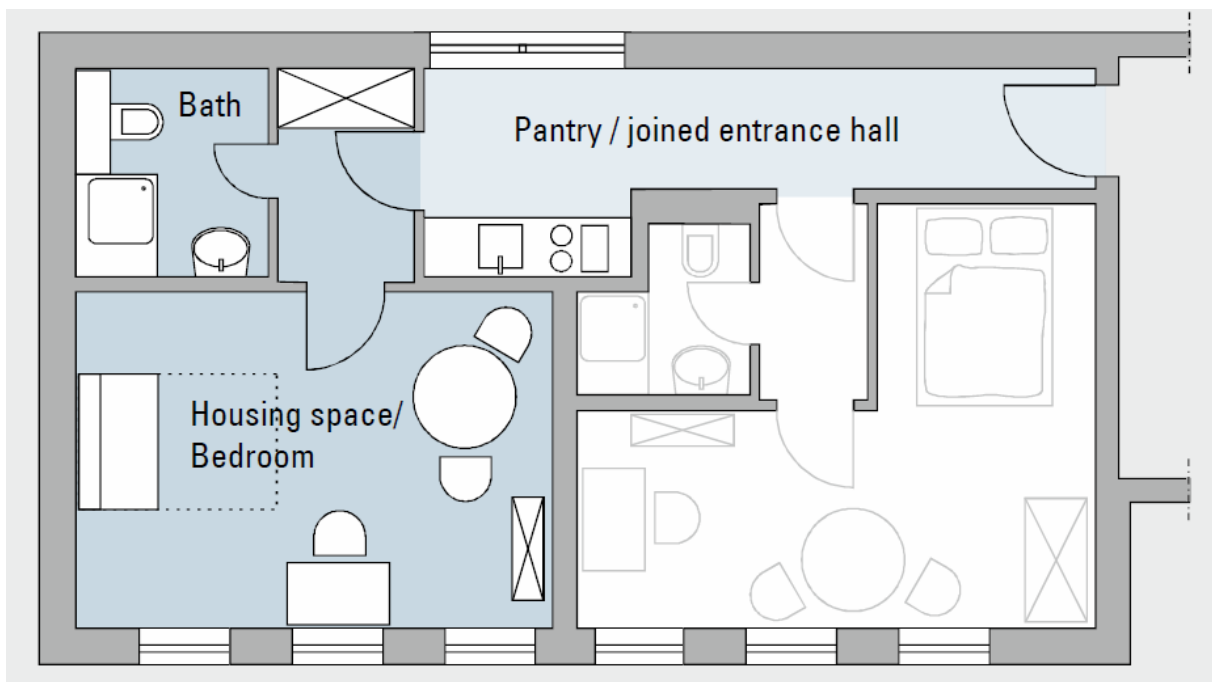
- Shared kitchenette, living space/bedroom
- Bed 140 x 200 cm



Apartment 2

23.5 m² - New building, basement

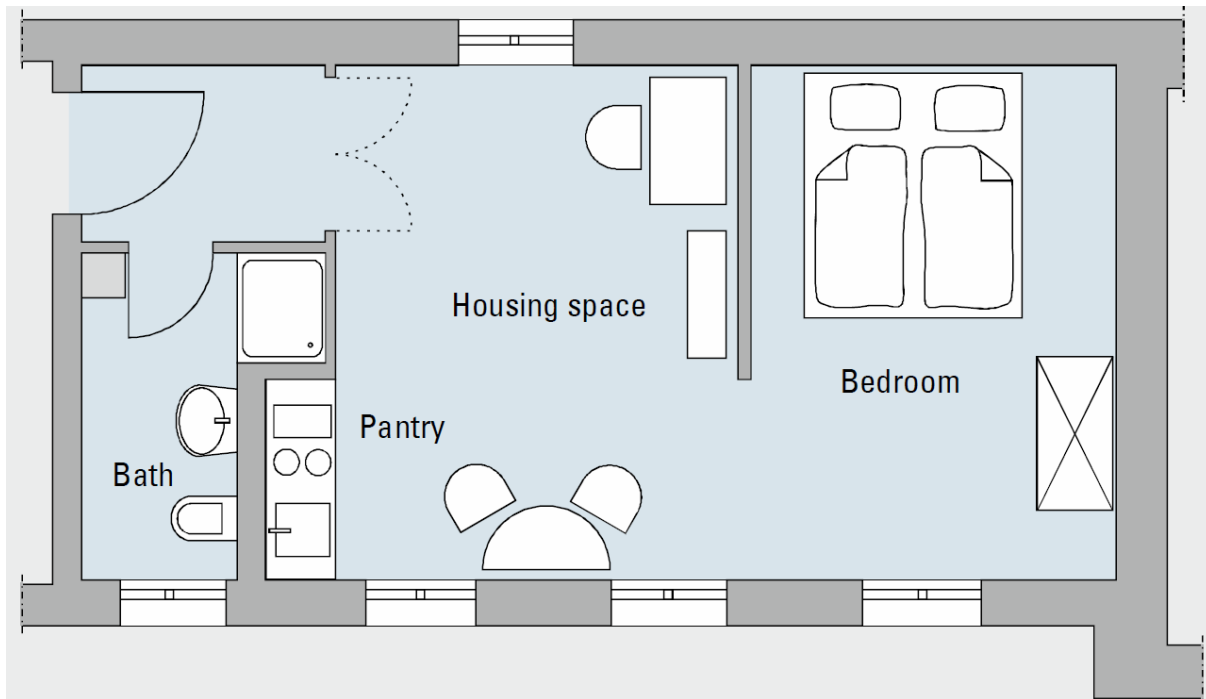
- Shared kitchenette, living space/bedroom
- Sofa bed 140 x 200 cm



Apartment 3

32.9 m² - Period building, ground floor

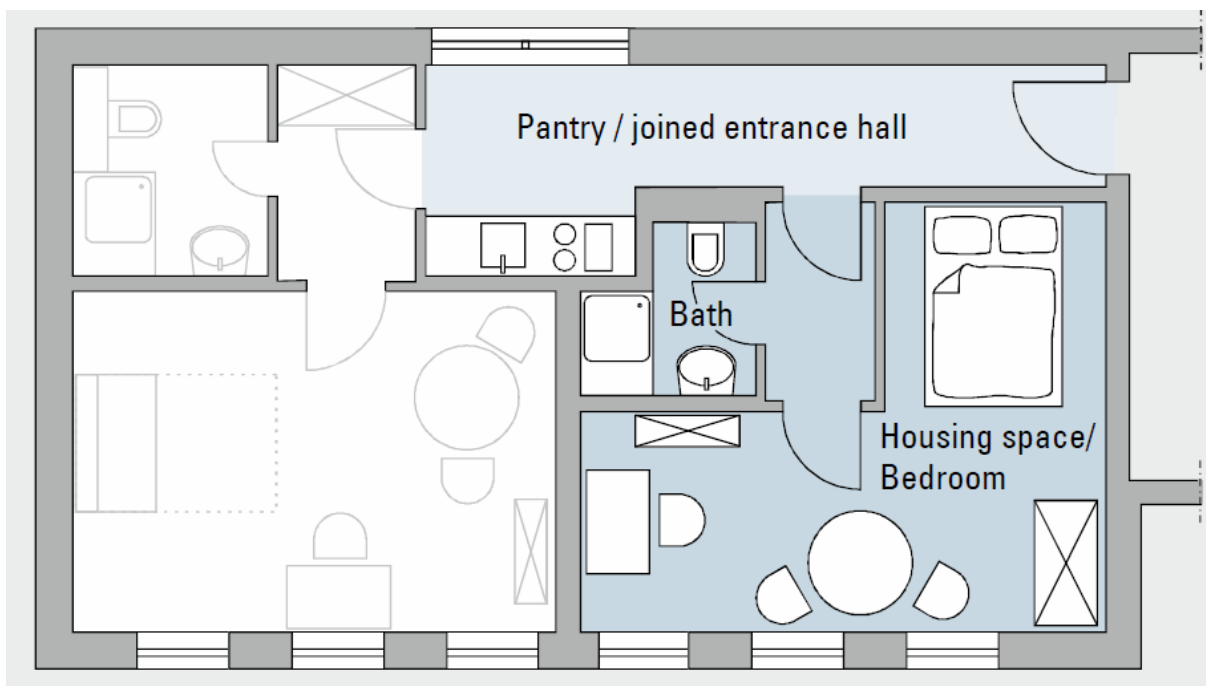
- Living space with kitchenette and separate bedroom
- Bed 160 x 200 cm



Apartment 4

22.0 m² - New building, raised ground floor

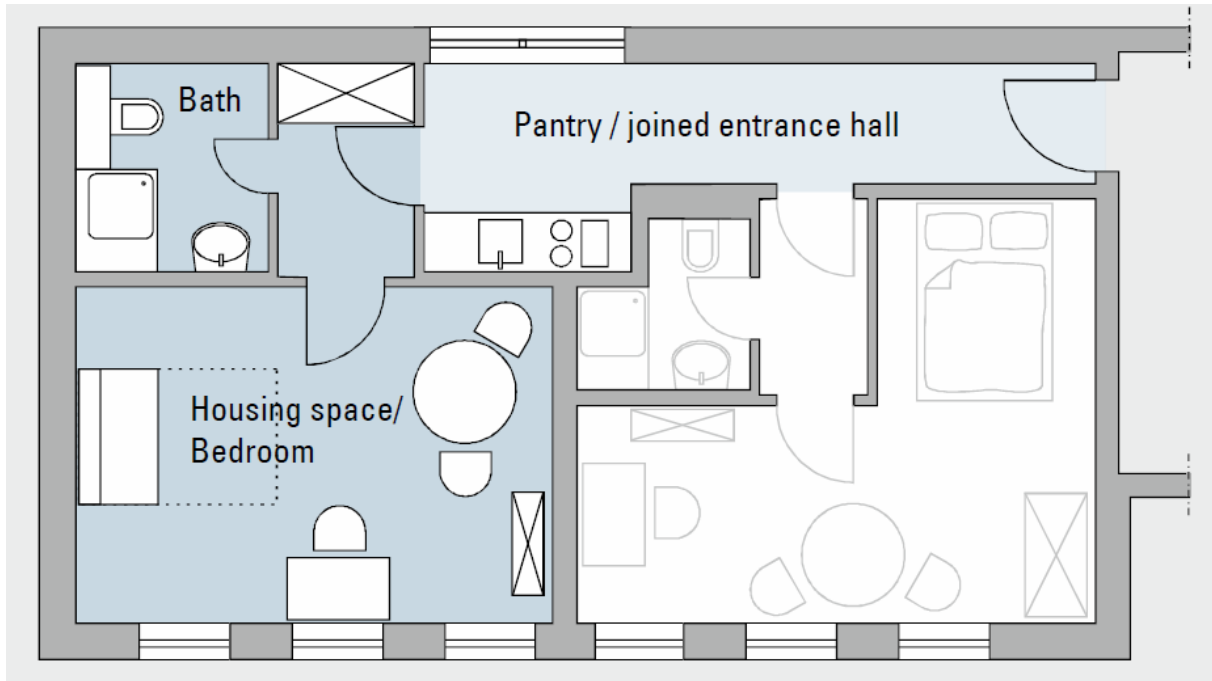
- Shared kitchenette, living space/bedroom
- Bed 140 x 200 cm



Apartment 5

24.3 m² - New building, raised ground floor

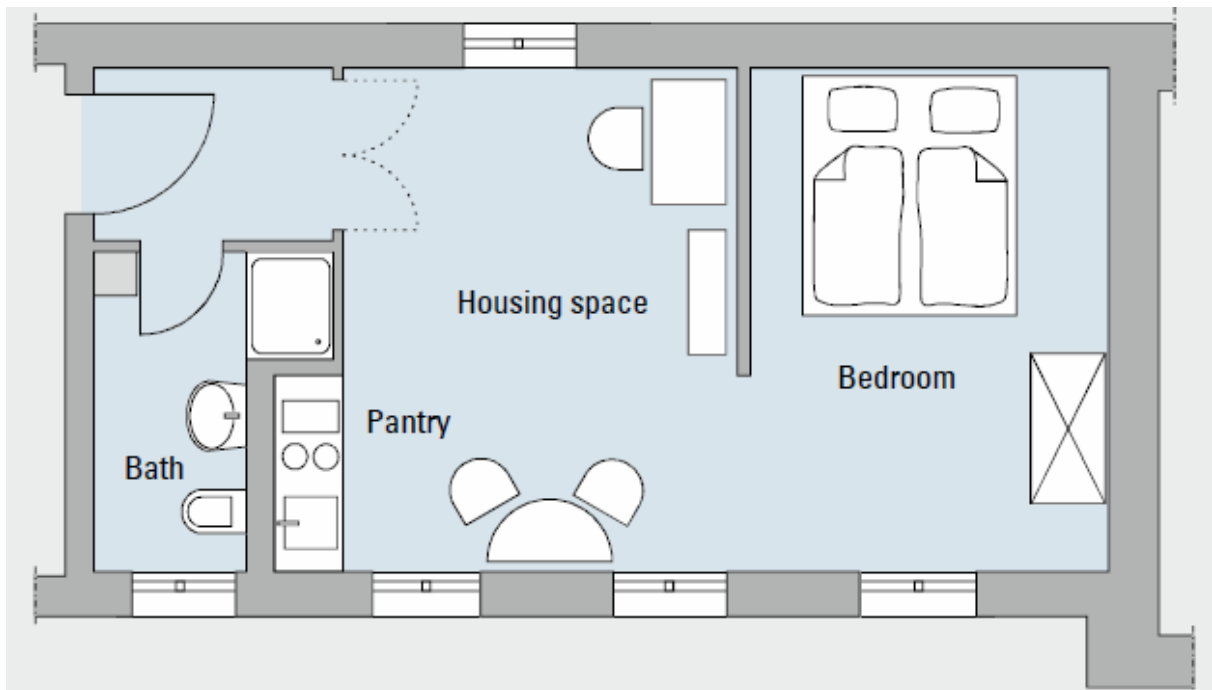
- Shared kitchenette, living space/bedroom
- Sofa bed 140 x 200 cm



Apartment 6

31.3 m² - Period building, top floor

- Living space with kitchenette and separate bedroom
- Bed 160 x 200 cm

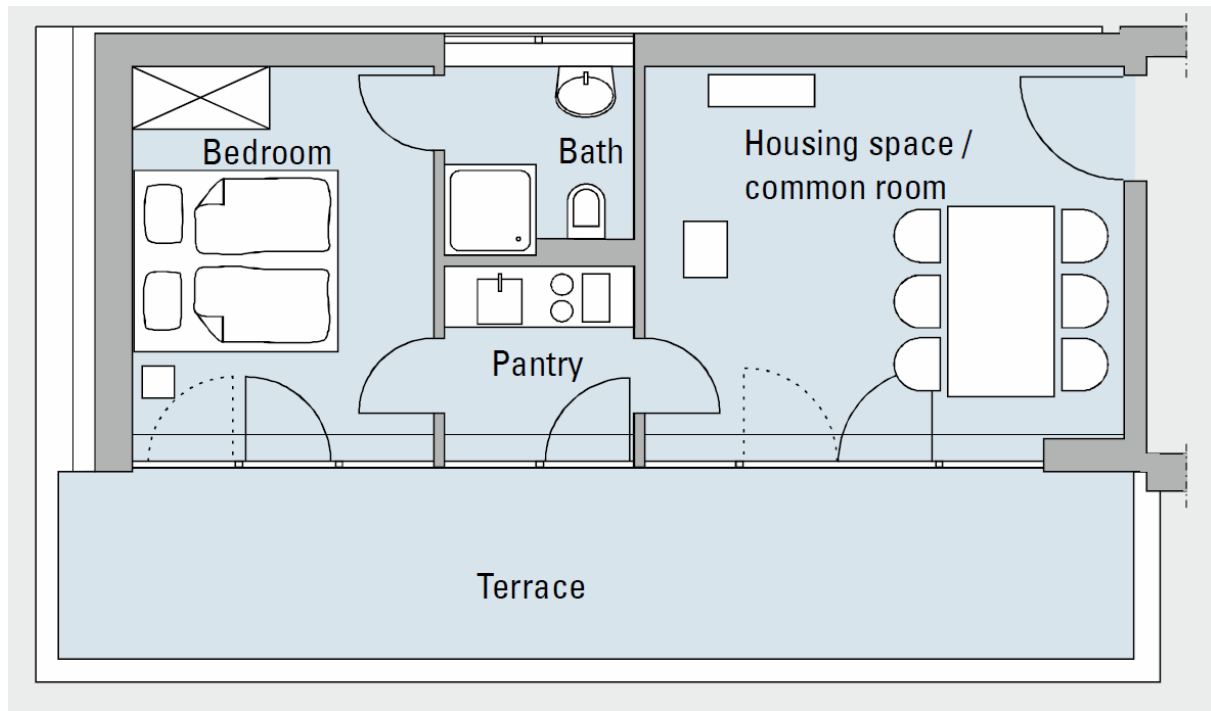


Apartment 7

46.6 m² - New building, attic housing including terrace

- Separate kitchen in the entrance, bedroom and living space and common room.
- Bed 160 x 200 cm

The common room is furnished with a table and six chairs and can be completely separated from the bedroom. Kitchen and bathroom are then connected to the common room, which can also be used separately as a meeting and recreation room.



Price list

The prices for the guest house apartments are calculated based on size and duration of the lease in order to ensure a balanced split in prices even for long-term stays.

Apartment	Number of nights	Occupancy	Price per night (tax not included)
1, 2, 4, 5	First 14 nights	Single occupancy	€44.00
		Double occupancy	€52.50
	For each additional night (rental agreement required)	Single occupancy	€15.00
		Double occupancy	€2.10 (for each additional person)
3, 6	First 14 nights	Single occupancy	€55.00
		Double occupancy	€63.00
	For each additional night (rental agreement required)	Single occupancy	€19.00
		Double occupancy	€2.10 (for each additional person)
7	First 14 nights	Single occupancy	€66.00
		Double occupancy	€73.50
	For each additional night (rental agreement required)	Single occupancy	€27.50
		Double occupancy	€2.10 (for each additional person)

Valid as of 7/1/2019